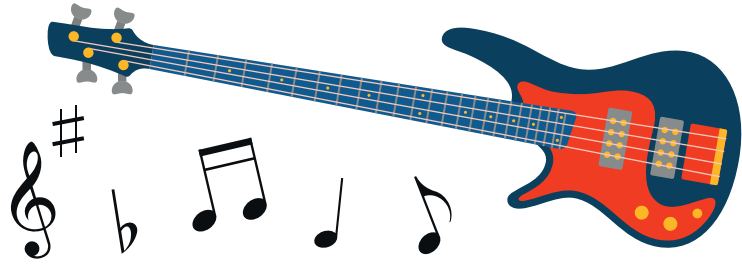


# MUSICAL ELEMENTS

A number of elements affects how a piece of music is played and sounds.

## TIMBRE / TONE COLOUR



Timbre (or tone colour) is the term used to describe the particular sound quality of an instrument or voice.

## PITCH



Pitch is how high or low a note sounds.

## TEXTURE



The effect of melodies and harmonies together. A lot of sounds playing close together is a thick texture.

## DYNAMICS



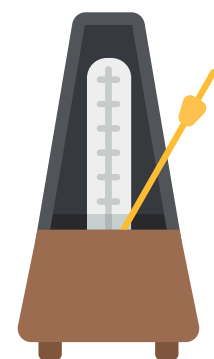
Dynamics are how loud or quiet a piece of music is played

## TEMPO



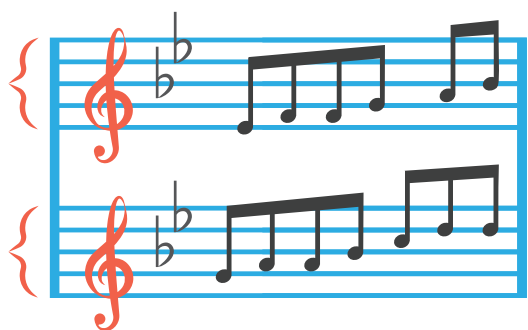
The tempo of a piece of music is how fast or slow it is played.

## DURATION



Duration is how long or short a note is.

## STRUCTURE



Structure is the overall plan of a piece of music.

## SILENCE



Silence (the gaps, rests and breaks) is also part of a piece of music.